

# Seasonal Table Settings

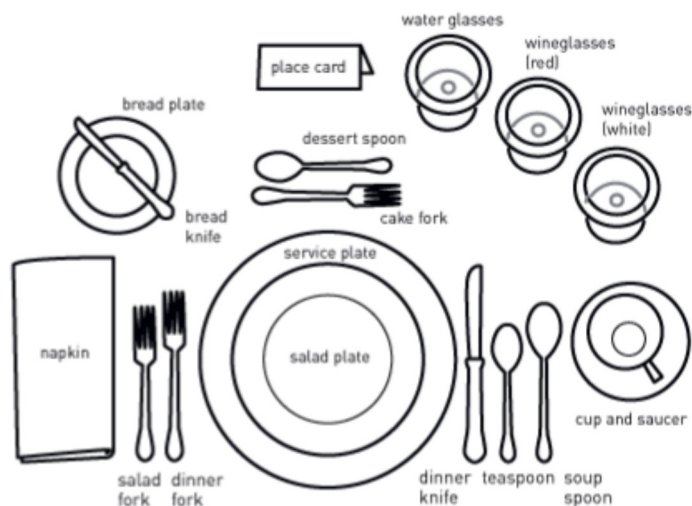
Tennessee Association for Family and Community Education  
State Conference 2019, Whitney Danhof, Extension Agent



**Tablesetting with Dollars, Thrifts and Crafts**

## Setting a Proper Table:

- ◇ Plates and flatware line up 1" from edge of table
- ◇ The service plate (or charger) is a plate that stays at the place setting during the meal. Food is not served on it but rather the food plates/bowls are placed on top of it.
- ◇ The flatware is placed with forks on the left and knives and spoons on the right (spoons on the outside) in the order of usage. In American food service, the salad is usually served first so the salad fork is on the outside with the dinner fork (main course) next to the plate. The spoons go on the right with the soup spoon (if using) on the far outside and the teaspoon next. The dinner knife goes next to the plate with the blade always facing the plate. The dessert flatware goes at the top of the plate. If you are using both a spoon and a fork, the handles will face their respective side (fork handle to the left and spoon handle to the right). If only using one utensil, the handle will face the right.



- ◇ Napkins go on the left outside the forks. However, it may also sit on the service plate. The flatware never sits on top of the napkin as when you sit down you will put the napkin in your lap and don't need to move the flatware. Normally the napkin is folded like a book so the pages open on the right (this makes it easier to place in the lap), but there are lots of fun napkin folding ideas.
- ◇ The glasses go at the tip of the knife. The water glass goes at the tip with wine or tea glasses to the right.
- ◇ The bread plate (if using) and spreader go at the top of the forks with the spreader across the top with the blade facing down.
- ◇ The cup and saucer go to the right of the spoons with the handle facing to the right.

## Dishware:

- ◇ Invest in a good set of basic white or off-white dishes
- ◇ Accent with patterned salad plates or chargers
- ◇ Utilize items in different ways (i.e. use your teacup collection to serve soup or chicken salad—use mason jars for glasses)
- ◇ Use crosscuts of tree trunks for chargers/place mats (or thicker cuts for centerpiece pedestals)

## Linens:

### ◇ Napkins:

Luncheon—11" square

Dinner—18"-22" square

Use other options like bandanas, new washcloths, vintage hankies, etc.

◇ **Tablecloths:**

Dark Green is most versatile color

Standard drop is 8"-12"

Sew bandanas together

Look for antique and vintage linens at thrift stores and yard sales

◇ **Runners:**

Lengths of fabric you don't have to hem, like burlap, knits or felt

Butcher's paper, brown craft paper, shelf liner or wrapping paper

Wide ribbons

Scarves

## **Centerpieces:**

◇ Keep centerpieces low or high so people can see over or under them

◇ Utilize what you have (i.e. grouping of crystal candlesticks—greenery from yard—collection of bunnies for Easter)

◇ Invest in some clear, wide vases

-Fill with Christmas balls

-Put pillar candles in center and fill around bottom with candies, cranberries, coffee

beans, dried beans, epsom salts, nuts in the shell, popcorn, birdseed or star anise

-Fill with lemons and cranberries and fill with water

◇ Circle short vases, jars or candles with candy canes, candy sticks, cinnamon sticks, colorful straws, asparagus spears, etc. Tie with twine or ribbon.

◇ Use hurricanes to fill with artificial fall fruits. Turn hurricanes on side and nestle in greenery. Fill with Christmas balls or pinecones. Tie ribbons around ends if desired.

◇ Use pedestals to add height to the table and fill with seasonal items like greenery and pinecones or moss and dyed Easter eggs

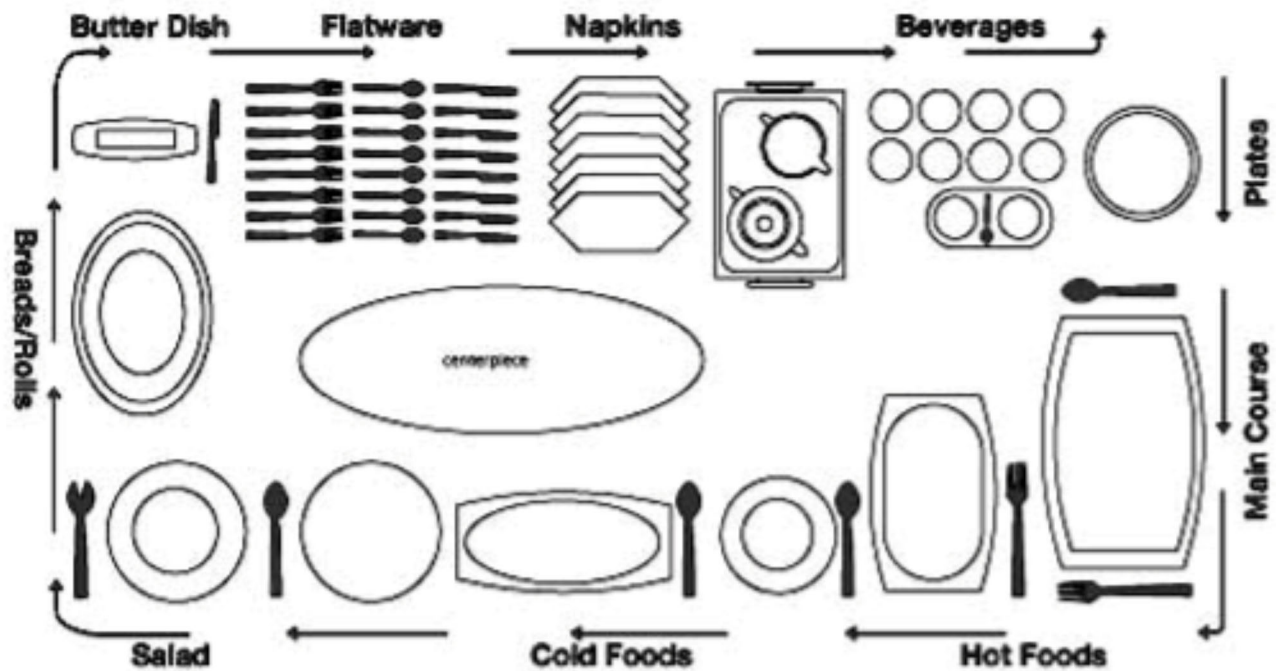
◇ Make decorative items





## Buffet Setting:

- ◇ The flatware and napkins go at the end of the buffet line so that hands are free to hold the plate and serving utensils.
- ◇ Beverages can go at the end or on a separate table or sideboard.
- ◇ Don't use more than one plate for the main buffet (i.e. salad plate and main plate). You can use dessert plates with the desserts on a separate table.





## Flea Market Pedestals

1 glass candlestick  
1 glass plate  
Super glue

Turn plate upside down. Glue the top of the candlestick to the center of the bottom of the plate with super glue. Let dry.

## Flea Market Cloches

1 clear vase  
1 door knob or hardware knob, depending on the size of your vase  
Super glue

Turn vase upside down. Glue the knob to the center of the bottom of the vase with super glue. Let dry.



## Chalkboard Placemats

Cork backed placemats  
Sandpaper (220 grit)  
Chalkboard paint (either spray or roll on-use a foam roller)  
Chalk

Use the sandpaper to sand off the shiny finish from the mats going in the same direction as you sand. Paint top and edges with several coats. Let dry completely according to your paint directions. Rub the surface with the side of chalk and erase to prime the chalk paint.

## Light Bulb Spiders

burned out light bulb  
black enamel paint for glass  
iridescent glitter paint  
2 google eyes  
4 black pipe cleaners



Completely paint light bulb with black paint and let dry. Paint on the iridescent glitter paint over the top of the black. Let dry. Glue google eyes to the bottom of the base part of the bulb for eyes. Create legs by wrapping one pipe cleaner around the middle of the other three. Then wrap the cleaner around the bulb where the base meets the glass and twist. Bend cleaners to make legs.

## Cheesecloth Ghosts

1 package cheesecloth (will make 2 medium ghosts)  
about 1 cup liquid starch  
frame materials (see below)

You will first need to create a frame for the covered ball to the top and wire arms as above. I used a half of a large styrofoam ball as the base and poked in a dowel with a smaller foil covered styrofoam ball at the top for the head. I wrapped wire around the upper third of the dowel and made arms with a loop and foil on the end. Use whatever you have around the house. Once you have the frame, cover the counter with foil and place the frame on top. Cut the long strip of cheese cloth in half and dip half in the starch. Wring out all the excess liquid making sure that the complete piece is damp with starch. Open up the cheesecloth and drape over the frame creating folds and arms as desired. Let dry overnight. Remove from the frame, being careful not to crush the structure of the cheesecloth.



## Painted Bottle Pumpkins

Glass bottles in various shapes  
White spray paint and primer in one  
Enamel paint in orange, copper, gold and brown  
Hemp twine rope (about 1/4" in diameter)  
Artificial silk leaves, appropriate sizes for your bottles  
Paint brush  
Scissors  
Clear drying tacky glue  
Pencil



Spray paint the bottles with white paint and allow to dry. Using the enamel paint, brush on a coat of orange and while still wet, streak in some vertical swipes of copper and gold to give the pumpkin depth and a slight shimmer. Paint just up to the neck of the bottle. Using the brown color, paint the neck of the bottle including the top rim and a little down into the inside of the neck. Let completely dry overnight.

For the stem and leaves, coat the neck of the bottle with clear drying tacky glue. With about 8-12" of the twine hanging down towards the bottom of the bottle, wrap the neck, starting at the bottom of the neck and working to the rim. Now wrap your way down the neck, over the first layer of wraps. As you wrap, tuck in the leaf stems, wrapping over the stem and then under the leaf on the next round, so they look like they are growing out of the stem. When you reach the bottom of the neck (all of the brown paint should be covered, except the rim), tie the end together with the beginning twine that is hanging down in a double knot. Trim the tails to about 8-12" depending on the height of the bottle. Run some glue down one of the tails and work it into the twine with your fingers while still wet. Then wrap the twine around a pencil with the wraps right next to each other. Pull the pencil out and then adjust the wraps to make a curly vine. Repeat with the other tail and let dry. Glue a few extra leaves into the top of the bottle as desired. See picture for details.



## Dryer Vent Pumpkins

Dryer venting with the metallic looking outside (box will make 3 pumpkins)  
1 can orange spray paint that lists metal on the label (will cover 3 pumpkins)  
Brown paper bags  
Bendable paper wrapped wire  
Light brown acrylic paint  
Green acrylic paint



Cut off enough dryer vent tubing to form a complete circle (about 31 ribs). You may need to use wire cutters. Form into a circle and staple ends together. Spray with orange spray paint using light coats and letting dry in between until it is completely covered. Using a sea sponge and a light brown acrylic paint that has been watered down, lightly sponge pumpkins. You want just a hint of brown.

For leaves: Crumple up a brown paper bag. Trace leaf patterns onto bags. You will need approximately 3 leaves per pumpkin in an assortment of sizes. Using green paint and sea sponge, sponge leaves green -letting some of the bag show through. Let dry and then crumple again.

For stems: Cut a 4" (approximately) wide strip of paper bag. Fold lengthwise and roll up slightly on an angle so it forms a spiral. Hot glue the end of the strip down to the side of the stem.

For tendrils: Paint wire with brown paint if not already brown or green. When dry wrap around a pencil to form a spiral.

To finish pumpkin: Hot glue the stem into the middle of the pumpkin. Take a wire tendril and bend it in the middle. Glue bent part to where the stem meets the pumpkin (you may have to straighten out the spiral for a little section to poke it down in). Add leaves around the stem using hot glue and sticking them down in near the base of the stem. You may want a small leaf on the tendril of some pumpkins.

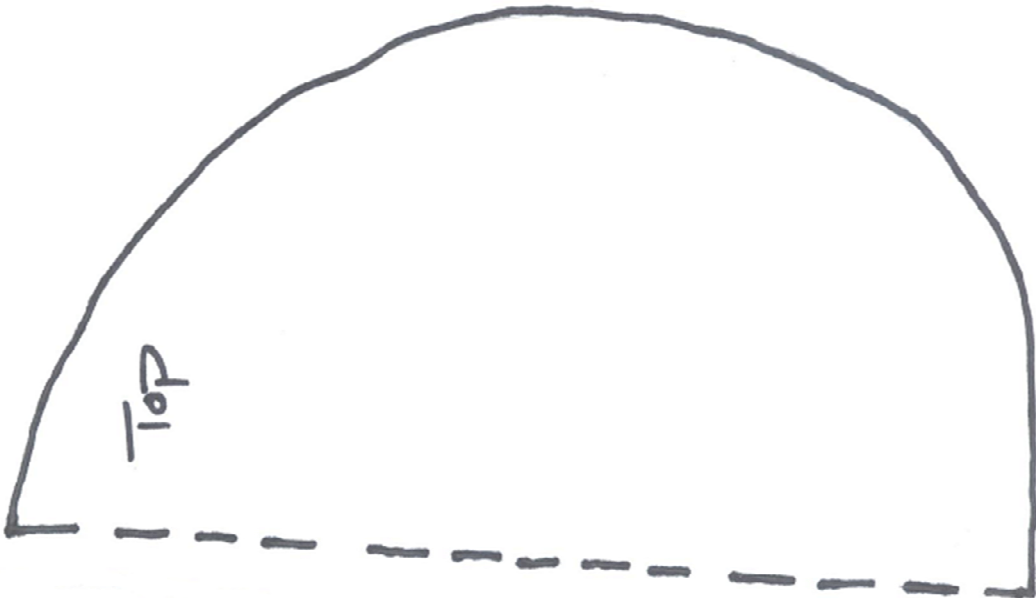
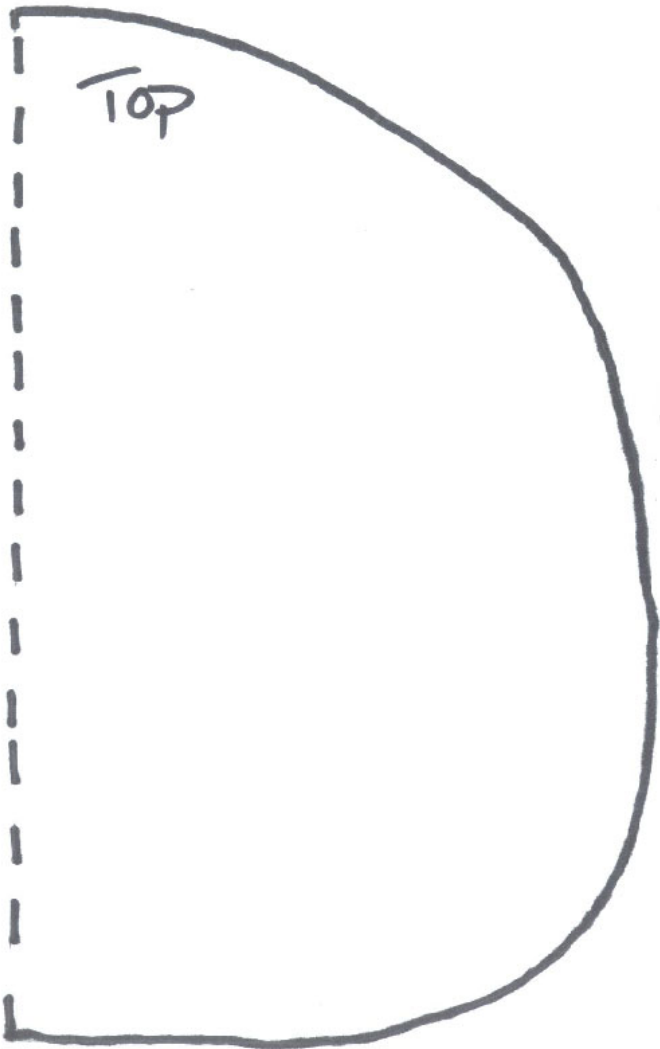
## Paper Pumpkins

5-6 different prints of orange scrapbooking paper  
Scissors  
Tacky glue  
Rope for stem  
Leaves (Burlap or fabric or paper)



Fold the scrapbooking paper with the right sides together and enough room for one of the patterns (on following page) to fit. Place the dotted line of the pattern on the fold of the scrapbooking paper and trace and cut out the pattern. Make two of each print of paper, using the same pattern. Stack the cutouts (still folded), alternating the prints, with the white back sides facing each other. Glue the white back sides together, lining up the edges exactly. To form the pumpkin, glue the top back side to the bottom back side, forming a circular pumpkin. Let dry. Glue several short lengths of rope together to make a stem and glue to the top with a leaf.

Paper Pumpkin Patterns

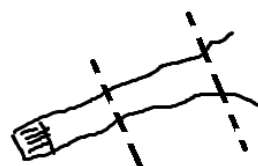




## Sweater Pumpkins

Old cable knit sweater in desired color  
Two rubber bands  
Polished hemp twine  
Yarn

Scissors  
Tacky glue  
Yarn Needle



Cut the sleeves off the sweater and set aside. Cut the remaining body of the sweater into approximately 1" x 4" strips. Cut the sleeves into 2-3 sections depending on the size of pumpkins desired and the size of the sleeve.

Turn tube of sleeve section inside out. Gather one end together and wrap a rubber band around it tightly about 1" from the end. Turn right side out. Fill the sleeve section with some of the body strips to desired size, leaving enough room to gather the top. Gather the top together and wrap with another rubber band at the base. Put some glue on the rubber band and about 1" - 1 1/2" up the remaining sweater above the rubber band. Tie twine around the rubber band over the glue, leaving at least a 6" tail. Wrap the twine around the sweater top, over the glue (the glue should ooze between the wraps) to the desired height of the stem and then wrap down back to the base of the stem. Tie off and leave a tail. Add additional glue over the top of the twine, if necessary to hold together. Trim off the top of the sweater, even with the top of the stem. To make the indentations of the pumpkin, thread the yarn needle with a long piece of yarn (about 4 feet or so). Make a knot in the end and take a small stitch at the bottom of the pumpkin to secure. Bring the yarn around the outside of the pumpkin and take a stitch at the top of the pumpkin near the base of the stem. Pull the yarn tightly so that it indents the side. Take a stitch or two to secure the tension. Then take the needle through the pumpkin to another side of the stem (about 1/3rd of the way around) and then go down to the bottom of the pumpkin. Take a stitch to attach and then pull tightly and secure with another stitch or two. Take the needle to halfway between the first two indentations at the bottom of the pumpkin. Bring the yarn up to the stem and stitch, pulling tightly. Take a couple of stitches to tie off and run needle through the pumpkin coming out and clipping the tail flush with the surface of the pumpkin.

To make the tendrils, coat the twine tails with a little glue and let it get tacky for a few minutes. Wrap a tail around a pencil and then slide the pencil out. Arrange tail as desired. Repeat with other tail. Let dry completely so it stiffens up.



# Crushed Velvet Pumpkins

Newspaper

Cardstock paper

Lightweight cardboard from a cereal box

7" square muslin

Dried beans or rice

18" square crushed velvet in desired color

Heavy duty thread to match velvet

Sewing thread

Polyester fiberfill

Brown jute rope

Felt tip marker

Scissors

Ruler

Sewing machine

Hot glue gun and glue sticks

Embroidery needle and long doll needle



Using the ruler and felt tip pen, make an 18" diameter circle on the newspaper for a pattern. Mark the center and create a little hole with the tips of the scissors. On the cardstock, trace the patterns for a 3" diameter circle and a 5" diameter circle, marking the centers.

Using the 18" pattern, trace onto wrong side of velvet with marker and mark a dot at the center. Cut out. Using the 5" pattern, place on the velvet, matching the center dots on the velvet and the pattern. Trace around the circle onto the velvet. Using the 3" pattern, cut out two circles from the muslin and one from the lightweight cardboard.

Sew the two muslin 3" circles together using a 1/4" seam allowance and leaving a 1" opening. Do not turn shape. Fill with beans or rice and stitch opening closed.

Using the heavy duty thread and embroidery needle, stitch 3/8" long running stitches on the velvet around the 5" traced circle, leaving the ends untied. On the wrong side of the velvet, place the cardboard circle in the middle of the stitching. Pull the thread up to gather the velvet around the cardboard, keeping it centered. Tie off the threads. Evenly adjust the gathers around the circle and turn over so the right side of the velvet is facing up.

Lift the edge of the cardboard and using the hot glue, place dots of glue underneath toward the center, leaving the edge of the cardboard free. Let cool. Using the sewing thread and machine, topstitch around the circle about 1/8" from edge (stitching through the cardboard).

Turn over with wrong side facing up. Glue the bean bag to the center of the circle, over the gathers.

With the heavy duty thread, turn under a 3/8" hem around the outside edge of the velvet circle and stitch with a long running stitch all the way around. Make sure your stitches are nice and long (1/2" - 3/4"). If they are too small the opening will be too large when gathered together. Pull the threads up to gather the edge until it looks like a shower cap. Stuff with fiberfill, being careful not to overstuff. Pull the threads tightly and tie off with a secure knot.

For stems, cut lengths of the rope about 3" long and glue together with hot glue until you have the diameter you wish (and will fit your opening). Use glue or fray check on ends of rope. Create an indentation in the fiberfill in the opening on the pumpkin and glue the stem into the center.



## Fall Jar Vases or Lanterns

Jar of desired size—can be a clean used jar or a canning jar  
Tissue paper in fall leaf colors  
Glossy Mod Podge  
Foam brush

Felt tip marker  
Scissors  
Pinking shears  
Sewing machine

Tear tissue paper into pieces about 1/2" or so. Brush Mod Podge onto a section of the outside of the jar and lay paper pieces on the wet Mod Podge. Edges should come up right next to each other or overlap some and colors should be alternated. Mod Podge over the top of the pieces and continue to work your way around the jar until it is completely covered on the outside. Let dry. You can use them as a vase with branches or wheat or you can use a flameless tea light inside for a lantern

## Button Indian Corn Napkin Rings

Toilet paper tube  
Tan paper  
Flat buttons in shades of yellow, orange, brown, red and various sizes  
Tacky glue

Cover tube with tan paper using tacky glue. Glue buttons on in random pattern, covering entire outside. Let dry. Use with a golden tan napkin.



## Indian Corn Napkin Rings

Multicolored bag of plastic tribeads (look for yellows, ambers, oranges and clear)

Orange pipe cleaner

Brown or tan paper twist

Empty wrapping paper tube (slightly smaller than paper towel or toilet paper roll)

Natural colored raffia

Needle nose pliers

Wire cutters

Scissors

X-acto knife

Hot glue gun and glue sticks

Pencil or skewer for pressing raffia into hot glue

Cut pipe cleaner into a 3" length with wire cutters. Using the needle nose pliers, twist a small loop on one end and press together to hold the beads. Thread alternating random colors of 14 beads onto the pipe cleaner to resemble Indian corn. Using the pliers, twist the remaining pipe cleaner back onto itself to create a little stem about 1/4" long at the top.

Cut the paper twist into a 3 1/2" length and untwist so it is like a flat paper ribbon. Cut three elongated football shapes from the ribbon using the entire 3 1/2" length (you won't use quite all of the width). Put some hot glue on the little stem and press the middle of the three footballs into the glue, placing them around the stem to cover it and gluing just above the beads. You don't want any of the orange stem to show. You can use the pliers to scrunch up twist just above the beads. When cool, fold the bottom half of the football up onto the top half and glue in place (like pulling the husk of the corn back).

Tie a doubled piece of raffia around the corn just where the paper twist husk and beads meet. Tie in a double knot and trim the ends to about 1/2"

For the holder, use the X-acto knife to cut off a 2" section of the wrapping paper tube. Hot glue one end of a piece of raffia into the inside of the tube, using the pencil or skewer to push it into the glue. When cool, start wrapping the piece of raffia around the tube lengthwise wrapping inside the tube and around the outside and back to the inside. Place the wraps right next to each other to completely cover the outside. When you reach the end of the piece, glue it to the inside of the tube and begin another piece (you may need to trim the raffia so it ends on the inside and not the outside). It will take 3-5 pieces of raffia to completely cover the tube—you may overlap a few if there are some bare spots.

Glue the beaded corn to the raffia wrapped ring, letting the husk part stick up above the ring and the beaded corn part lined up with the raffia, straight up and down.





## Wooden Block Place Card Holders

1 (1 1/2") square wooden block  
Solid color scrapbooking paper (or craft acrylic paint in desired color)  
Scrapbooking paper in several designs  
Dimensional flowers and cutouts  
3D dots foam dot adhesive squares (1/8" or 1/4" squares of foam with sticky backs)  
1 medium size black binder clip  
Ruler  
Pencil  
Scissors  
Tacky glue  
Hot glue gun and glue sticks



Cut 5 (1 1/2" square) pieces from the solid color scrapbooking paper. With tacky glue, glue to five sides of the wooden block (the unfinished side is the bottom). Or alternatively, paint the block and let dry.

From the other designs of scrapbooking paper, cut a total of 5 (1 1/4" square) pieces. Glue these centered on top of the solid color paper or the painted sides. Using the foam dots to create dimension, apply dots to the back of the dimensional flowers and cutouts and attach to the four sides of the block, leaving the top empty. Cut a piece of the patterned paper to fit around the outside of the binder clip and glue around clip. Use hot glue to glue bottom of clip to the top of the block with the silver arms standing upright to hold messages.

## Felt and Fabric Leaves

Felt in various fall colors  
Quilting fabrics in fall color prints  
Black sewing thread  
Cardstock paper

Copy leaf patterns onto cardstock paper and cut out for a template. Place the leaf template on a piece of the felt. Trace around it with the marker and cut out with scissors. For each felt leaf, make a corresponding fabric leaf, tracing around the template with the marker and cutting out with the pinking shears. Lay the wrong side of the fabric leaf on top of the corresponding felt leaf. Thread your sewing machine with the black thread. Sew from the stem of the leaf up the center to within about a 1/4" of the furthest tip. Lift your presser foot and turn the leaf all the way around (180 degrees). Stitch over the previous stitching down partway to where you want to make a vein out to another tip. Sew to the tip and then turn and return over the stitching to the center again. Continue down the center vein making side trips out and back to the other tips in the leaves. When you reach the stem end again, backstitch and clip your threads. All of your vein stitching should be double sewn at this point.



**Felt and Fabric Leaf Patterns**



## Glass Block Table Decoration

1 4" x 8" glass block  
3 yards of 3" wide sheer white ribbon  
gold glitter covered ting ting or other branches  
1 stem white floral berry beads  
½ yard of ½" ribbon or bias tape  
wire cutters  
scissors  
hot glue and liquid welder glue



Stand block upright on 4" side. Wrap 3" wide ribbon around the block, starting with one end of the ribbon at the top center and following the groove around the bottom of the block and back up to the center again. Cut ribbon. Glue ribbon to block using liquid welder at the top where the ends meet. Using remaining wide ribbon, make a full bow with long streamers. Glue bow to the top of the block. Pull one streamer to the front of the block and glue at an angle across the front of the block. Cut off just short of the bottom of the block. Using a few pieces of the ting ting and the berry beads, make a small bouquet. Cut the stems so that the tip of the longest branch is about 12" long. Glue stems together using hot glue. Using narrower ribbon or bias tape, wrap and glue around the stems of the bouquet about 2 ½" up the stems. Using liquid welder, glue bouquet to the face of the glass block at an angle so the tips extend above the bow and the stems cross on top of the streamer coming down the front.

## Christmas Tree Treat Bags

Cake decorating plastic disposable piping bag  
Red and green candies  
Twine  
Wooden star  
Tacky glue



Fill bag with candies leaving enough room at the top to twist closed and have about 1" of plastic left. Tie the bag closed with twine, leaving about 3" of twine on each end. Twist the twine around the remaining plastic to form a trunk, gluing as needed and tying the ends off at the base where you started. Glue a star to the point of the bag for the tree topper.



## Wooden Ball Place Card Holders

Tissue paper in desired colors and patterns  
2 1/4" diameter wooden doll head  
Glossy decoupage medium (Mod Podge)  
Wire  
Skewers to hold heads while painting  
Paint brush  
Hammer and awl (or a larger size nail)  
Drill and 1/16" bit  
Clear drying glue



Tear the tissue paper into small irregular shapes. Place the doll head on a skewer and place in a glass or something to hold it while painting and drying. Paint the surface of the doll head with the decoupage medium. While wet, place the tissue paper pieces on the ball in a random fashion. Paint more medium over the top of each piece as it is added. They may wrinkle a little as you place them, just smooth down with your finger and brush. Let the pieces wrap to the flat bottom side a little and overlap the pieces until all of the ball is covered. When the surface is covered, paint with one more coat of the medium and allow to dry. With the hammer and awl, make a small pilot hole in the top of the doll head. Drill into the head about 1/2" or so. Shape the middle of a piece of wire into two or three loops for holding the card (about 1/2" diameter), leaving long tails (about 2"). Twist the tails together and cut the ends even (leaving about 1 1/2 inches. Dip the ends of the wire into glue and insert them into the hole. Allow to dry.

## Candy Santa Sleighs

1 Kit Kat Candy Bar  
Ribbon the width of the Kit Kat Bar  
2 wrapped candy canes  
5 miniature chocolate bars  
1 foil wrapped chocolate Santa  
1/4"—1/2" wide ribbon  
White paper  
Transparent tape  
Scissors



Wrap Kit Kat bar with ribbon and tape ends together. Tape the candy canes to the bottom of the Kit Kat bar to make runners for the sleigh. Wrap the miniature chocolate bars with white paper, taping ends. Stack two bars on top of each other and tape together with a rolled circle of tape between the bars. Repeat with 2 more bars. Place the two stacks side by side and tape the final bar on top between the two stacks. Tie the narrower ribbon around the stack, coming up the sides of white paper, and tie a knot on top, trimming the ends as desired. Tape the entire stack to the Kit Kat bar at the back edge. Tape the Santa chocolate to the front, leaning against the stack like he's driving the sleigh!

## Ring in the New Year Bells

2 wood jumbo craft sticks

1/4" wide ribbon

Large jingle bells

Black curling ribbon

Paper Tags with "Ring in the New Year!"

Metallic thread

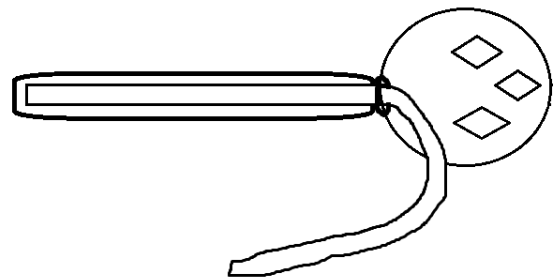
Spray Paint (black and silver)

Scissors

Tacky glue



Spray paint the craft sticks black and let dry. If the bells are not in good shape, spray them silver. Cut a length of the 1/4" ribbon that is double the length of the sticks. Lay one stick down and glue the cut ribbon down the center length of the stick. Thread the ribbon through the hanging loop on the bell. Double the ribbon back down the length of the stick, on top of the previous ribbon, leaving very little slack in the ribbon so that the bell is right at the tip of the stick. Glue the second stick on top of the first. Tie the curling ribbon onto the sticks with the 1/4" ribbon and curl the ends. Tie the tag to the ribbon with a little thread.



## Confetti Cookies

Sugar cookie dough

Edible cookie decorations (like stars etc.)

Frosting

Roll out dough and for each clock cut 3 circles with a round cookie cutter. On one of the circles, cut out the middle with a smaller round cookie cutter to leave about 1/2" ring. Bake the cookies as directed and let cool. To assemble, place one whole cookie down and pipe a ring of frosting around the edge. Lay the ring on top of the frosting to glue down. Pour some of the candy decorations into the center and then put another ring of frosting around the cookie ring and top with the remaining whole cookie. Frost and decorate the top of the cookie. When you break the cookie open, the decorations will spill out like confetti!





# Thanksgiving/Fall Table

Dollar Store contact paper shelf liner

Mason jar filled with black beans  
and a short pillar candle

Dollar Store wastebasket upside down  
with drawer pull glued on top

Sweater Pumpkins



Miniature chalkboard easels

Thrifted plates

Corrugated paper rectangle and  
cinnamon stick tied around napkin with twine



# Christmas Table

Dollar Store contact paper shelf liner

Thrifty ceramic miniature houses  
Painted white and glittered

Three candy canes taped together  
For a place card holder stand



Dollar Store washcloths for napkins  
Thrifty ceramic napkin rings

Thrifty Plates

Candy Santa Sleighs



# New Years' Eve Table

Dollar Store contact paper shelf liner

Small alarm clocks

Confetti Clock  
Cookies

Pint canning jars filled with black beans  
Black paper circles and number printables  
Glued to black painted jumbo wood craft sticks



Dollar Store washcloths for napkins  
Watches for napkin rings

Thrifty plastic chargers painted black  
Thrifty Plates topped with clock paper printable  
Clear plate on top

Ring in the New Year Bells