



President's Tidbits

Thank you to all 105 who attended the frigid Information Day in Murfreesboro on January 21! Thank you to my own Williamson County Council officers who shared their hospitality with a lovely table of delicious refreshments. Thank you to the Central Region Board and advisors for being welcoming and sharing vital information to all FCE members in attendance. It was a great day with the presentation of a quilt to Penny West of Wilson County from the TAFCE Q.U.I.L.T. project, and an inspirational presentation encouraging us to "think big" regarding our volunteer hours from Rev. Raymond Burns and his wife Cernovia.

It is with excitement and anticipation that I encourage you to attend the 2022 TAFCE Central Region Leadership Retreat on May 24-26, with an extra night option for May 23. A change in location and all of the possible unknowns is always challenging; we have experienced so much change in the past year or so. The retreat will be held at UT Southern, Pulaski, TN in Giles County. We will have the option of staying in dorms or in an apartment (note: limited apartment availability). The campus is much smaller and intimate, it will be a great adventure, and so much FUN!

Thank you, thank you, to all the instructors who sent to us a wonderful assortment of educational, FCL, and marketable skills/craft classes. So many great classes; it is going to be difficult for me to choose! Based on retreat suggestions, we will offer a pizza party Monday night for the extra night option. Night Owl classes will only happen on Tuesday evening this year as our entertainment will be an on-campus, full length movie Wednesday evening. Options continue with full-time or commuter participation. Costs have increased, so our registration fee for the overnight option and one day/commuter increased by \$5. Something new—we are offering an option of a single room occupancy in the dorm.

A huge thank you to Carolyn Binkley and the retreat committee of Barbara Brackett, Charlene Budd, Wendy Drumm, Deborah Foster, Myra Walker, FCS agent and Patsy Watkins, FCS agent, that are working tirelessly and providing excellent advice and support as we plan, plan, plan for the Retreat. Come to the Leadership Retreat and Grow with FCE! Invite an FCE friend!

Peace, Mary Alice Weber, Central Region President



TAFCE Mission Statement:

To strengthen the home and community by improving the quality of life of individuals and families through continuing education, leadership development, and community service.



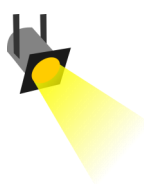
IMPORTANT DATES

- **MARCH 15**
TAFCE SCHOLARSHIP APPLICATION DUE
- **APRIL 15**
LEADERSHIP RETREAT CLASS REGISTRATION DUE
- **APRIL 15**
LEADERSHIP RETREAT REGISTRATION DUE
- **APRIL 15**
Project Brochure Due to NAFCE
- **April 19-20**
FCL Training Lebanon TN
- **April 27**
Central Region Board Meeting Murfreesboro
- **May 1-31**
Imagination Library Month
- **May 15**
State project 'Day of the Family'

Please Visit our Facebook
TAFCE, Central Region

All dates, forms, contacts and information can be found on the TAFCE Website.

WWW.TAFCE.ORG



Retreat Spotlight

****WE HAVE A NEW LOCATION****



Save the Date!

**TAFCE, Central Region Retreat
May 24-26, extra night May 23**



Time is approaching fast. Save the dates of May 24th thru May 26th. If you are planning to come on Monday May 23rd, *room keys may be picked up from 2pm - 4pm and registration is 4pm – 6 pm, “No earlier”*. For those arriving May 24th and 25th, *keys may be picked up and registration is from 8am - 10am*.

We have 2 great tours, excellent classes this year with fabulous instructors, movie night and Night Owl classes. We are so excited about this year’s retreat. It will be great to see people faces once again. Come see your friends, make new ones and enjoy the FUN.

Carolyn Binkley: Chairperson of Leadership Retreat

Wendy Drumm

VP for Public Policy

Do you know someone who goes above and beyond in the FCE family and their community? It is time to nominate that person for Best of the Best! There is a description of what the requirements are to nominate someone and a nomination form in the Central Region Planner. Please have your nominations by June 15th to Wendy Drumm.

Hi! I am the new treasurer for the Central Region. My name is Patty Priest and I am from Franklin County. I attended Middle Tennessee State University and earned a B.S. and Ed.S. I also earned a MAT from the University of the South. I taught mathematics at South Junior High School in Cowan, Tennessee, and later became Superintendent of Schools in Franklin County. I retired in Tennessee and began work in Dade County, Georgia, where I ultimately became Superintendent of Schools.

I have been the county council president and I am presently special projects coordinator in Franklin County. I have taught classes at retreat and at the local level. I enjoy learning about new crafts and new quilting techniques.

Presently I am a member of the Franklin County Elections Commission where I serve as secretary. I am a board member of the PEN foundation and the past president of the Franklin County Art Guild. I also served as the past president of the Material Girls quilt guild. I enjoy volunteering at the local hospital and the Artisan Depot in Cowan, Tennessee.

I have a son who is an artist and lives with me, along with two dogs and two cats. We are both animal lovers. As a long-time home demonstration member, my grandmother was a great influence on me belonging to FCE.

Patty Priest: Central Region Treasurer

Membership Update

The TAFCE, Central Region presently has a membership of 1295. Wilson and Williamson Counties have over 100 members each. Although our enrollment is a reduction of 13% from 2021, it is better than the 17% reduction over 2019. The pandemic has obviously hurt our enrollment like many other organizations. Tell your friends and neighbors about all the wonderful things we do and learn in FCE, and perhaps our membership will increase. Let’s all make a concerted effort to invite others to join our awesome organization.

Patty Priest, Treasurer

Officer Spotlight

Patty Priest

Central Region Treasurer

IMPORTANT DATES

- **May 23**
Extra Night at Leadership Retreat
- **May 24-26**
Leadership Retreat at UT Southern, Pulaski

Visit our Facebook page:
TAFCE, Central Region

All dates, forms, contacts and information can be found on the TAFCE Website.

WWW.TAFCE.ORG



County Spotlight: Franklin County

In FCE, our mission is to strengthen individuals, families, and communities through continuing education, leadership development and community action. Franklin County FCE does just that through our monthly Embroidery Club and Quilt Club. In 2014, our FCE began a Charity quilt project that has made 300+ charity lap quilts for homeless and needy people in Franklin County. These quilts have been distributed each year during "Feed the Need" Thanksgiving dinner. Quilts are made from donated fabric by twelve members of the quilt club, friends, and beginning quilters. The FCE Quilt Club, made up of FCE members who volunteer their time and talents to help others, meets the first Wednesday of each month at the UT/TSU Extension Office in Winchester. In February, March, October and November the members hold a two-day workshop where friends volunteer to assist by cutting, sorting, pressing and pinning the quilts. This allows others who may or may not sew to be involved in this project. The charity quilts are a great way for people who enjoy quilting to use their talents to help others. This is an ongoing project and volunteers are welcomed.

In addition to the charity quilts, in 2017 the Quilt Club made 12 "Veteran's Quilts" lap quilts that were distributed to veterans in Franklin County. Each veteran's quilt contained 9-12 squares of donated muslin with an image ironed on by quilt club members. The images were hand colored with crayons by local children at the public library, children and teachers at the Summer Extended School Program and adults during the Franklin County Fair. The squares were then pressed to heat set the image and pieced into a lap quilt. Veteran's names are drawn from a collection box at the Franklin County Library and contacted. This is an ongoing project with the goal to give 10 "Veteran's Quilts" each year to veterans.

Each club has a philanthropy they support with money and/or supplies. Our club members often have "project Days" before their scheduled club meeting to work on walker caddies, adult bibs, pajama bottoms for Isaiah:117 and sleep mats from plastic grocery bags. Members also can be found volunteering with 4-H Summer Sewing classes, Farm City Day, the local hospital and 4-H Cooking Schools.



*Vice President for Programs
Louise Armstrong*



May 24-26, 2022

It's time to get your creative juices flowing and send your creative writing entries to Vice President for Programs, Louise Armstrong, by June 1, 2022. There are categories for everyone including poetry, essays, short stories, children's stories, feature article/news article or miscellaneous. Whether you use a pen or a computer, everyone does some writing. So share your creative writing with FCE and get your entries in to the region!

Are you an FCE member going back to school and need help with book expenses? The Central Region FCE is here to help with the Kate Bagnall Scholarship. Two \$1000 scholarships will be awarded. Send your application form to Louise Armstrong by June 15, 2022.

Calling all potential officers! The Central Region is looking for a Vice President for Public Policy and Secretary. We will be officially voting for our current President-Elect, Peggy Richmond, as president. Please consider these leadership opportunities to serve your fellow FCE members and submit a nomination form to Louise Armstrong by June 15, 2022.

New Location
Central Region Retreat
UT Southern Pulaski, TN

All dates, forms, contacts and information can be found on the TAFCE Website.

WWW.TAFCE.ORG



Annual Meeting Special Recognition



2021 Central Region Best of the Best winner
Kathryn "Kitty" Bush, Cannon County

2021 Central Region Heart of FCE winner
Robin George, Wilson County

2021 Central Region Creative Writing winners:

POETRY: 1st: Rebecca Decker, Putnam Co., 2nd: Carol Shaw Johnston, Williamson Co.

ESSAYS: 1st: Joyce Hall, Cheatham Co., 2nd: Evelyn Hilton, Williamson Co.

SHORT STORIES: 1st: Greta Kirby, Smith Co., 2nd: Evelyn Hilton, Williamson Co.

CHILDREN'S STORY: 1st: Evelyn Hilton, Williamson Co., 2nd: Brenda Mitchell, Warren Co.

FEATURE ARTICLE/NEWS ARTICLE: 1st: Carol Shaw Johnston, Williamson Co., 2nd: Penny West, Wilson Co.

MISCELLANEOUS: 1st: Jessie Ruth Goad, Smith Co., 2nd: Brenda Mitchell, Warren Co.

2021 Central Region FCL graduates:

Jean Blick, Robertson County

Barbara Brackett, Franklin County

Evelyn Hilton, Williamson County

2022 Conference Theme winner:

Saddle Up with FCE

Regina McCathern

Wilson County

2021 Kate Bagnall Scholarship Winners:

Grace Harville, Smith County (right)

Cassidy Holt, Putnam County (far right)



Annual Meeting Table Decoration Winners:

1st place, Williamson County

2nd place, Grundy County

3rd place, Wilson County

Totals for Food Drive for One Generation Away:

366.5 pounds of food donated.

This equates to an estimated \$623.00 value in donated food.

\$320.00 in monetary donations.

In total, an estimated 3,772 people will be fed with this donation.



CVU Report for 2019:

Total FCE Members Reported: 95

Total Volunteer Hours Reported: 69,501

Total People Reached: 2,732,147

Total Worth of Volunteer Hours:
\$1,983,558.54

CVU Report for 2020:

Total FCE Members Reported: 93

Total Volunteer Hours Reported: 73,000

Total People Reached: 3,383,130

Total Worth of Volunteer Hours:
\$2,083,420.00

2021 Annual Meeting

Special Recognition

Cultural Arts 2021

BASKETRY: 1st Carolyn Bickford-Warren 2nd Hettie Lee Richerson-Wilson
BEADWORK: 1st Connie Lytle-Macon 2nd Wynona Clayborne-Macon
CERAMICS: 1st Carolyn Russell-Smith 2nd Robin George-Wilson
CHAIRS & STOOLS: 1st Donna Elliott-Marshall
CROCHET:THREAD: 1st Lisa Hunter-Coffee 2nd Phila Grace-Lincoln
CROCHET:YARN: 1st Anamaria Baus-Warren 2nd Pamela Sites-Rutherford
CROSS STITCH COUNTED: 1st Connie Lytle-Macon 2nd Linda Pepper-Wilson
CROSS STITCH-OTHER: 1st Janis Spangler-Sequatchie 2nd Petra Mitchell-Wilson
DECORATIVE PAINTING: 1st Carol Vanattia-Coffee 2nd Jean Inman-Warren
DOLLS: 1st Anne Waggoner-Smith 2nd Penny West-Wilson
EMBROIDERY:HAND: 1st Kitty Bush-Cannon 2nd Dianna Milner-Moore
EMBROIDERY-MACHINE: 1st Gayle Wynner-Franklin 2nd Chrissie Guidry-Maury
FINE ARTS PAINTING: ACRYLICS: 1st Dava Merritt-Franklin
2nd Robin George-Wilson
FINE ARTS PAINTING:DRAWINGS& CHARCOAL: 1st Kerriann Ross-Wilson
2nd Robin George-Wilson
FINE ARTS PAINTING:PASTELS: 1st Sharon Spigel-Williamson
2nd Lucy Eastman-Warren
FINE ARTS PAINTING:WATERCOLOR: 1st Peggy Hunter-Marshall
2nd Dava Merritt-Franklin
HANDCRAFTED TOY: 1st Lisa Hunter-Coffee 2nd Linda Prince-Marshall
HAND STITCHING: 1st Gaye Martin-Franklin 2nd Annette Balch-Rutherford
HOLIDAY DECORATION:CHRISTMAS: 1st Teresa Wilson-Macon
2nd Linda Prince-Marshall
HOLIDAY DECORATION:NON CHRISTMAS: 1st Penny West-Wilson
2nd Sharon Spigel-Williamson
JEWELRY-NON-BEADED: 1st Robin George-Wilson 2nd Skylar Gilbert-Wilson
KNITTING:HAND: 1st Barbara Mutchmore-Putnam 2nd Connie Lytle-Macon
KNITTING:MACHINE: 1st Winnie Decker-Williamson 2nd Becky Bean -Franklin
NEEDLEPOINT: 1st Sandra Shoemake-Wilson 2nd Melinda Downing-Macon
PAPER CRAFTS: 1st Anne Rowland-Rutherford 2nd Petra Mitchell-Wilson
PHOTOGRAPHY-B/W/PERSON: 1st Crystal Davis-Warren 2nd Wynona Clayborne-Macon
PHOTOGRAPHY-B/W/PLACE: 1st Rebecca Pullen-Williamson 2nd Crystal Davis-Warren
PHOTOGRAPHY-B/W/OTHER: 1st Wynona Clayborne-Macon 2nd Janice Boyd Warren
PHOTOGRAPHY-COLOR-PERSON: 1st Robin George-Wilson 2nd Jo Ann Smith-Coffee
PHOTOGRAPHY-COLOR-PLACE: 1st Wynona Clayborne-Macon
2nd Regina McCathern-Wilson
PHOTOGRAPHY-COLOR/OTHER: 1st Wynona Clayborne-Macon 2nd Jean Inman-Warren
POTTERY: 1st Penny West-Wilson 2nd Kay Currie-Cannon
QUILTS:APPLIQUE/CATHEDRAL WINDOW: 1st Maggie Klenke-Smith
2nd Julie Reynolds-Wilson
QUILTS:BABY/LAP: 1st Maggie Klenke-Smith 2nd Wanda Sandifer-Macon
QUILTS:EMBROIDERED-HAND: 1st Martha McBride-Warren 2nd Teresa Wilson-Macon
QUILTS:HAND/HAND: 1st Wanda Sandifer-Macon 2nd Margaret Vance-Smith
QUILTS:MACHINE/HAND: 1st Teresa Wilson-Macon 2nd Elva Dean Bell-Warren
QUILTS:MACHINE/MACHINE: 1st Sandra Shoemake-Wilson 2nd Patsy Elliott-Williamson
QUILTS:HAND OR MACHINE/PROFESSIONALL QUILTED:
1st Evelyn Hilton-Williamson 2nd Geneva McKnight-Cannon
QUILTS:PILLOW: 1st Teresa Wilson-Macon 2nd Maggie Klenke-Smith
QUILTS:WALL HANGING: 1st Maggie Klenke-Smith 2nd Bobbye Cox-Franklin
QUILTS:OTHER: 1st Julie Reynolds-Wilson 2nd Gaye Martin-Franklin
REPURPOSING: 1st Karen Russell-Macon 2nd Robin Robinson-Wilson
RUG MAKING: 1st Dina Turcotte-Warren 2nd Jeannie Such-Wilson
SCULPTURE: 1st Kay Currie-Cannon 2nd Beverly Thompson-Giles
STAINED GLASS: 1st Joan Lester-Wilson 2nd Robin George-Wilson
TATTING: 1st Connie Lytle-Macon 2nd Mary Sue Young-Rutherford
WEAVING:HAND: 1st Frances Hobbs-Warren 2nd Frances Baker-Wilson
WEAVING:LOOM: 1st Teresa Wilson-Macon 2nd Gwendolyn Ray-Putnam
WOODWORKING: 1st Sue Shetley-Lincoln 2nd Timmy Jared-Wilson

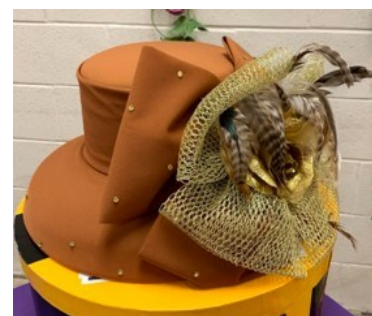
Fashion Revue

1. Suit, dressy ensemble, or better dress
1st Brenda Clark 2nd Naomi Smith
2. Jacket, blazer or coat
1st Lisa Cothern 2nd Penny West
3. Casual and active wear
1st Sharon Spigel 2nd Tiffany Goldhamer
4. Children's casual and better wear
1st Betisu Lovett 2nd Jeannie Hunter
5. Teen's casual and better wear
1st Tiffany Goldhamer 2nd Jeannie Freeze
6. Sewing for an adult
1st Sue Adcock 2nd Jeannie Hunter
7. Recycled garment
1st Karen Russell 2nd Penny West
8. Wardrobe accessory
1st Tiffany Goldhamer 2nd Teresa Wilson
9. Decorative Sweatwear
1st Sue Adcock 2nd Regina McCathern

Purchased Items

10. My Best Fashion Purchase: Casual Wear
1st Judy Ramsey 2nd Regina McCathern
11. My Best Fashion Purchase: Better Dress
1st Jeannie Freeze 2nd Bebe Burns

Viewers Choice: Bebe Burns, Wilson County
(My Best Fashion Purchase)



Viewers Choice:
Sharon Spigel
Williamson County
Holiday Decoration
Non-Christmas

'Saddle Up with FCE' Conference Update

Conference Chairs are in place. Please look through the list, decide where you want to volunteer, and contact the Chair to offer your time or ideas. To see every county represented in the list of chair people, hostesses, hospitality, attendee gift bag items, or donated gift shop items would send this conference chairlady 'over the top of the saddle'. Yee-haw!

Attendee Gift Bags--Theresa Bell and Sharon Jessop, from Williamson County
Banquet Favors --Alda Bandy and Frances Hobbs, from Warren County
Bd. & Exec. Alum Gifts --Charlene Budd and Giles County FCE
Creative Craft Classes--Linda Prince and Deborah Foster, from Marshall County
Decorations--Regina McCathern and Robin George, from Wilson County
Education Sessions--Patty Priest and Barbara Brackett, from Franklin County
Games/Line/Chair Dance, Bingo--Crystal Holt and Tammy Guess, from Putnam County
Gift Shop--Connie Smith and Whitney Danhof, from Bedford County
Hospitality--Peggy Richmond and Myra Fisher (see below) from Grundy & Smith County
Hostesses--Frances Baker and Genna Kilga from Wilson County
Instructors' Gifts--Mary Sue Young and Norma Stone from Rutherford & Moore County
Invitation Committee--Shelly Barnes, Wilson County
Pins--Mary Alice Weber from Williamson County
Registration--Wendy Drumm and Brenda Hannah from Smith & Moore County
Secret FCE Pal--Eileen Horton from Moore County
Service Project--Mary Alice Weber from Williamson County
Tours--Glenda Palmer and Carol McClure from Williamson County
Walk-In Craft Classes--Carolyn Binkley from Wilson County



Conference Logo



Conference Pin

Thanks to Shelly for putting a link to the invitation on our website, take a peek:

<https://www.youtube.com/watch?v=N6sxxgntYeA>

I have a donation letter for monetary support or gift items if you want a copy to take to businesses that you know the owner or support. These have been well received and will help defray costs of audio visual equipment, hospitality room needs, or add to the attendee gift bags. I can gladly email you a copy.

So far, donations have been received from American Metal Technology, Mid South G.I., Dr. Evan Cox, City of Lewisburg Councilman, Heritage South Community Credit Union, Saddle Charms from Vinson's Crossroads FCE Club, Box of T-Shirt bags for attendees and Trading Post from Charlene Budd, pens and supplies from Newell Brands.

Many thanks for your encouragement, Emily Gordon, 2022 Conference Coordinator

"Chuckwagon" Canteen Hospitality Suite

Peggy Richmond is the Chairperson and Myra Fischer is the Co-Chair for our 2022 Hospitality Suite. Listed below are volunteers who have signed up to help as "Cookies" for the Canteen. We need three more volunteers and hope you will join our team to make this hospitality suite the best one ever! Please contact Peggy Richmond.

Carolyn Eden Berlepsch
Barbara Mills-Brackett
Marilyn Bryan
Jeannie Freeze

Carol Michael Vanattia
Anne Waggoner
Harriet Wezel



This year we are asking each county to make a monetary donation in the amount of \$40, or whatever your council feels like you can do for the hospitality suite. For safety and health reasons we are not asking for fresh baked donations as we need to control the amount of handling for our food and beverage. We feel like we will be able to purchase what we want to offer with the monetary donations. If you feel like you can get donations from your local Walmart, Kroger, Sam's Club in the form of gift cards or other individually wrapped items, that would be so appreciated and acceptable. Thank you so much for anything you do to help us make this a great place for some R & R for all the attendees of state conference.

Peggy

We are looking forward to the many beautiful and unique creations that will be brought to the 2022 Annual Meeting September 8th.

Charlene Budd, Chairperson for Cultural Arts

Fashion Revue for 2022 —if anyone has any comments or suggestions, please contact Regina McCathern. Can't wait to see what 2022 has for Fashion Revue...
Regina McCathern, Chairperson for Fashion Revue